

The Gilmore Ranch

This is a breathtaking, unimproved 617.25 acre tract of recreational land. It is truly its own little world with approximately 184 tillable acres and 99.3 acres in CRP and CREP acres wrapped around 338 acres of beautiful, mature timber. The patches of tillable acreage give this property countless, ideal hunting possibilities. The size and shape of the Gilmore Ranch gives it the capabilities of "keeping" all types of wild game. It also has enough income producing land to make it financially appealing as well, giving it the best of both worlds.



The information contained herein is believed to be accurate, however, it is subject to verification and no liability for errors or omissions is assumed. Seller reserves the right to reject any and all bids or offers. All inquiries, inspection appointments and offers should be directed to:



Worrell-Leka Land Services, LLC

2240 W. Morton
Jacksonville, IL 62650
Phone: 217-245-1618
Fax: 217-245-5318
Email: allanw@worrell-leka.com

2240 W. Morton
Jacksonville, IL 62650



Worrell-Leka Land Services, LLC

Gilmore Ranch



**617.25 Acres
Northern Greene
County, Illinois
Recreational Land**

**Worrell-Leka Land
Services, LLC**

617.25 Acres of Greene County Land For Sale

Location: Northern Greene County, Illinois, on Greene/Morgan County line, 5 miles east of Roodhouse.

Acresage: 617.25 acres, with approximately 184 tillable acres, and 84 acres in CREP and 15.3 in CRP with annual payments of \$13,335.55.

Topography: Rolling to steep.

Minerals: Minerals are intact.

Title: Seller will provide the buyer title insurance in the amount of the purchase price.

Possession: At closing, subject to tenant's rights.

Terms: Cash at closing

Taxes: \$2,203.38

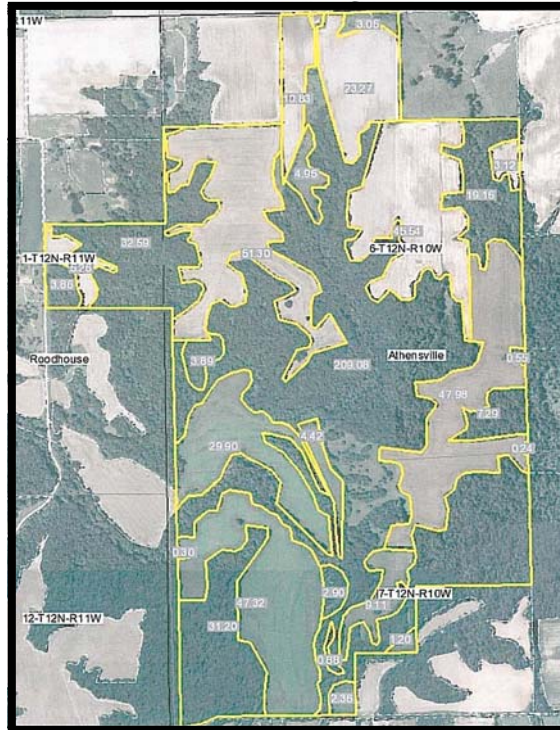
Price: \$2,750 per acre.

Agency Notice: Allan Worrell is the seller's designated agent. To offer a contract to purchase or for additional information, please contact:

Phone (217) 245-1618

Fax (217) 245-5318

E-mail at allanw@worrell-leka.com.



**Worrell-Leka Land
Services, LLC**

2240 W. Morton
Jacksonville, IL 62650
Phone 217-245-1618
Fax 217-245-5318
E-mail: allanw@worrell-leka.com